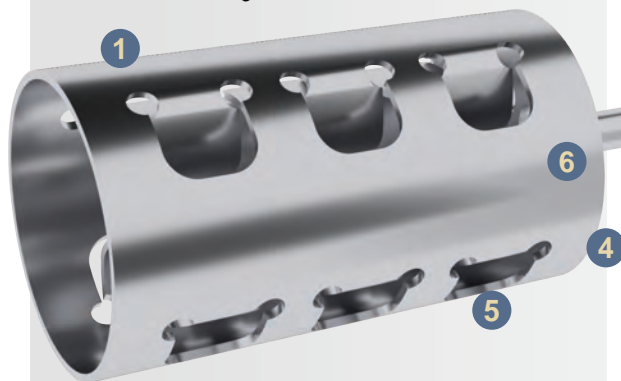
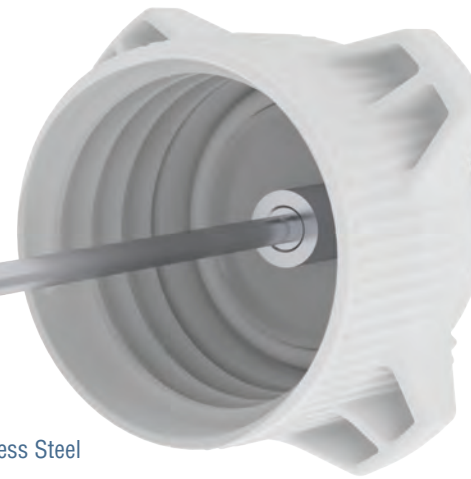


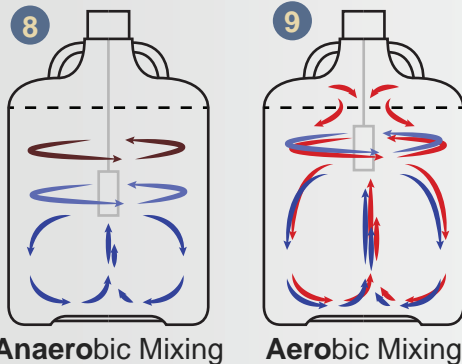
Next Generation Mixing Technology from Foxx Life Sciences. The Teras Turbine™ has four mixing modes: Top Anaerobic, Top Aerobic, Full Mixing, and Bottom Mixing. Top Anaerobic is ideal for mixing of less viscous material at the top of the carboy or bottle. Top Aerobic is for adding air into the mixture within the carboy or bottle. Full Mixing is for simultaneously circulating fluid from top to center and bottom to center. Bottom Mixing is for lifting heavy or viscous materials at the bottom of the carboy or bottle. Mixing heads are available in 15mm, 25mm, 50mm, and 100mm sizes, and are made of autoclavable stainless steel.

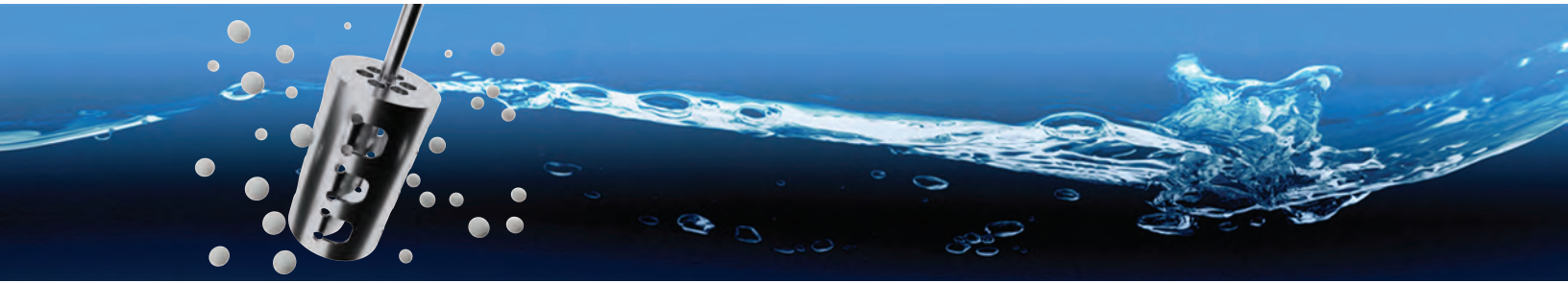


- 1 Teras Turbine Mixing Head
- 2 Teras Turbine Shaft
- 3 Teras Turbine 1200RPM Motor



- 4 Made from high quality AISI 316 Stainless Steel
- 5 No external blades, which reduces the risk of injury during cleaning
- 6 Due to the high quality finish, there is minimal surface turbulence during mixing resulting in higher energy efficiency
- 7 The patented Teras Turbine head provides excellent verticle and horizontal mixing to produce a "full mix"
- 8 Anaerobic heads are designed to mix solutions without introducing air bubbles into solution
- 9 Aerobic heads and shafts are designed to provide full mixing while introducing and dispersing air throughout the solution
- 10 When paired with Foxx's line of EZgrip carboys, mixing results are uniform and homogenous with no dead spots





| CAP | DESCRIPTION | PART NUMBER |
|-----|--|--------------|
| | Teras Turbine Mixer Assembly, VersaCap 80 w/ Motor and Controller | 400-0102-FLS |
| | Teras Turbine Mixer Assembly, VersaCap 120 w/ Motor and Controller | 400-0103-FLS |

| SHAFT | LENGTH | MATERIAL | HOLLOW | SOLID | THREAD | PART NUMBER |
|-------|--------|----------|--------|-------|--------|--------------|
| | 200mm | 316 SS | | ✓ | Male | 400-0401-FLS |
| | 300mm | 316 SS | | ✓ | Male | 400-0402-FLS |
| | 600mm | 316 SS | | ✓ | Male | 400-0403-FLS |
| | 200mm | 316 SS | ✓ | | Male | 400-0404-FLS |
| | 300mm | 316 SS | ✓ | | Male | 400-0405-FLS |
| | 600mm | 316 SS | ✓ | | Male | 400-0406-FLS |

| MIXING HEAD | SIZE | MATERIAL | BOTTOM | MIXING STYLE | MIXING VOLUME | PART NUMBER |
|-------------|-------|----------|---------------|--------------------|-------------------------|--------------|
| | 15mm | 316 SS | Open | Anaerobic | 0 - 5L | 400-0301-FLS |
| | 25mm | 316 SS | Open | Anaerobic | 1L - 15L | 400-0305-FLS |
| | 25mm | 316 SS | Open | Aerobic / Full Mix | 1L - 15L | 400-0307-FLS |
| | 50mm | 316 SS | Open | Anaerobic | 10L - 60L | 400-0309-FLS |
| | 50mm | 316 SS | Reduced Inlet | Anaerobic | 10L - 60L | 400-0310-FLS |
| | 50mm | 316 SS | Open | Aerobic / Full Mix | 10L - 60L | 400-0311-FLS |
| | 50mm | 316 SS | Reduced Inlet | Aerobic / Full Mix | 10L - 60L | 400-0312-FLS |
| | 100mm | 316 SS | Open | Anaerobic | 30L - 100L ¹ | 400-0313-FLS |
| | 100mm | 316 SS | Reduced Inlet | Anaerobic | 30L - 100L ¹ | 400-0314-FLS |
| | 100mm | 316 SS | Open | Aerobic / Full Mix | 30L - 100L ¹ | 400-0315-FLS |
| | 100mm | 316 SS | Reduced Inlet | Aerobic / Full Mix | 30L - 100L ¹ | 400-0316-FLS |

¹ Depending upon application, the larger Teras Turbine motor can sufficiently mix larger volumes.

| ACCESSORIES | DESCRIPTION | PART NUMBER |
|-------------|---|--------------|
| | Teras Turbine Mixer Motor w/ Controller, 1200RPM | 400-0201-FLS |
| | Teras Turbine, Connector, Rod, Teras Turbine Mixer Shaft to Motor | 400-0501-FLS |
| | Teras Turbine, Connector, Electrical, Cable, Male | 400-0601-FLS |
| | Teras Turbine, Connector, Electrical, Cable, Female | 400-0602-FLS |
| | Teras Turbine, Adapter, Gas Mix | 400-0701-FLS |
| | Teras Turbine, Mixing Stand | 400-0901-FLS |

